

FRONT END CYLINDER

TYPE : TFC

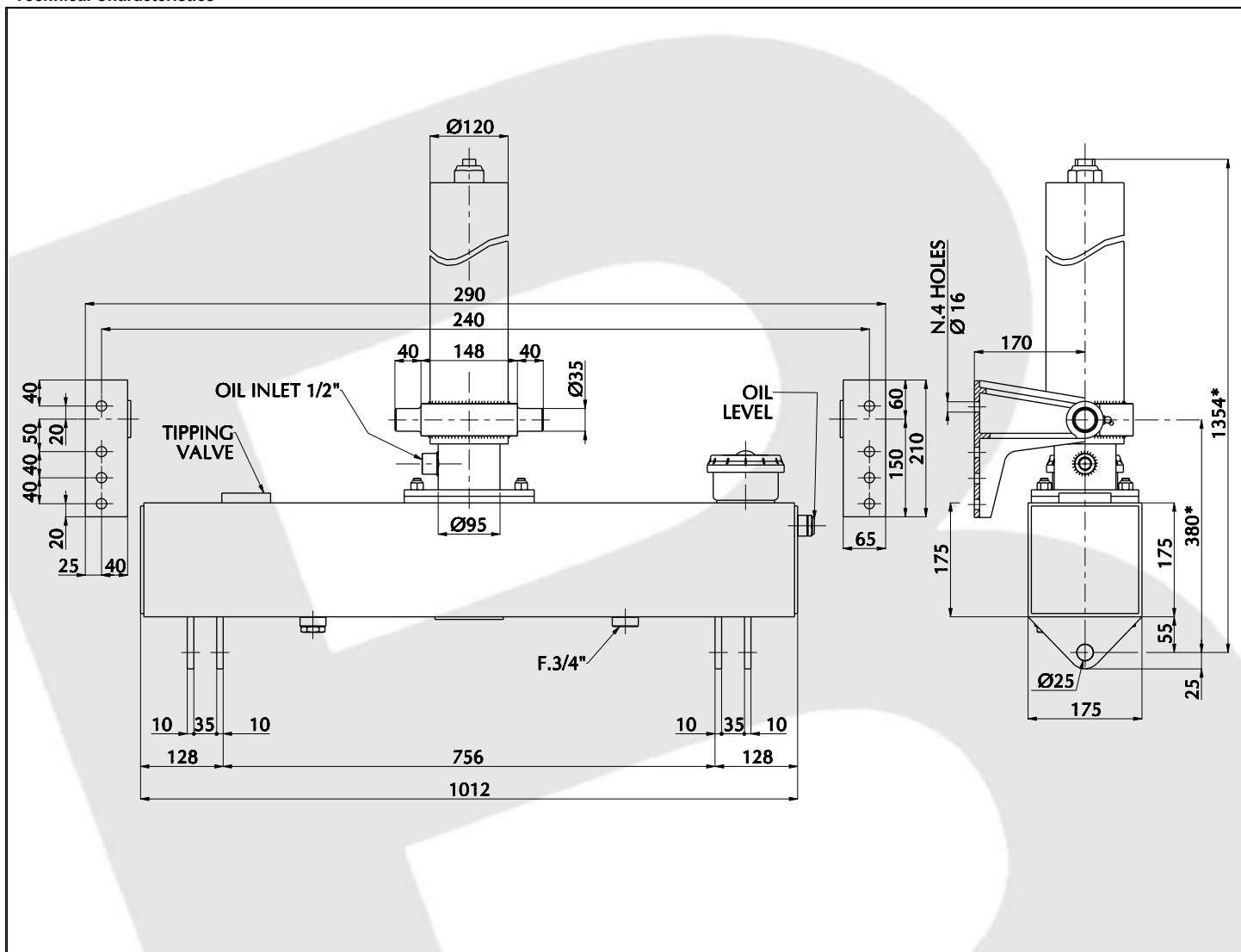
SERIE : Ø 075

CYL.TYPE

TFC 75.3.2700 - Ic.0380

For Tipping Weight See Advices Below

Technical Characteristics



Cylinder stages

Ø Stage	Ø045	Ø060	Ø075	Ø090	Ø105	Ø120	Ø140	Ø160						
Thrust at 150 Bar [Tons]	2.40	4.30	6.60	---	---	---	---	---						
Stages of cylinder	●	●	●											

Specifications

Stages number	03
Cylinder Stroke [mm]	2700
Cylinder weight only [Kgs]	114
Working volume [Ltrs]	9.2
Max Working pressure [Bar]	150

Technical information

<input type="checkbox"/> Oil	: See oil specification sheet
<input type="checkbox"/> Tipping weight	: Net weight body + Payload
<input type="checkbox"/> Fitted centres [*]	: Closed centres plus 20 mm pull out

Brackets and Accessories

Chassis bracket [2 Units x cylinder]	---
Lifting bracket right hand	SSL#P1H 03.00 [Kgs] x 1 =
Lifting bracket left hand	SSL#P2H 03.00 [Kgs] x 1 =
Chassis brackets mounting kit	---
Lifting bracket mounting kit	KFSS#001

Recommendation

<input type="checkbox"/> This Binotto cylinder is designed as a lifting device only
<input type="checkbox"/> It must not be used as a structural member or be subject to side loads
<input type="checkbox"/> Pump flow in consultation with Binotto engineering department

Advices

All our cylinders are manufactured to suit the particular application in the differing world markets/climate. Should you require details of the exact lifting capacity of the cylinder that has been selected for your application/vehicle then please contact our technical department who will be only pleased to explain or advise.

BINOTTO SRL

BINOTTO IS CONSTANTLY ENGAGED IN IMPROVING ITS PRODUCTS AND THEREFORE RESERVES THE RIGHT TO MODIFY WITHOUT ANY NOTICE CHARACTERISTICS SHOWN

VIA DIVISIONE JULIA, 7/B - 36031 DUEVILLE [VI] ITALY • TEL. 0039.0444.593290 - FAX. 0039.0444.593357 • E-MAIL. INFO@BINOTTO.COM

Edit : 04 • 2006

Rev. : 01 • 2006

Date: 01.09.2006

Pag.: TFC 075.3.2700_01