

REAR MOUNTED OIL TANK

MATERIAL : STEEL

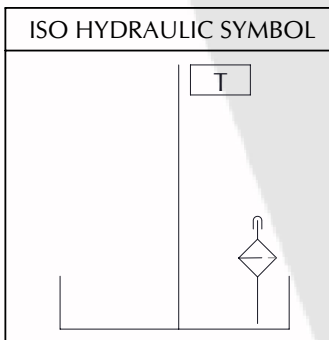
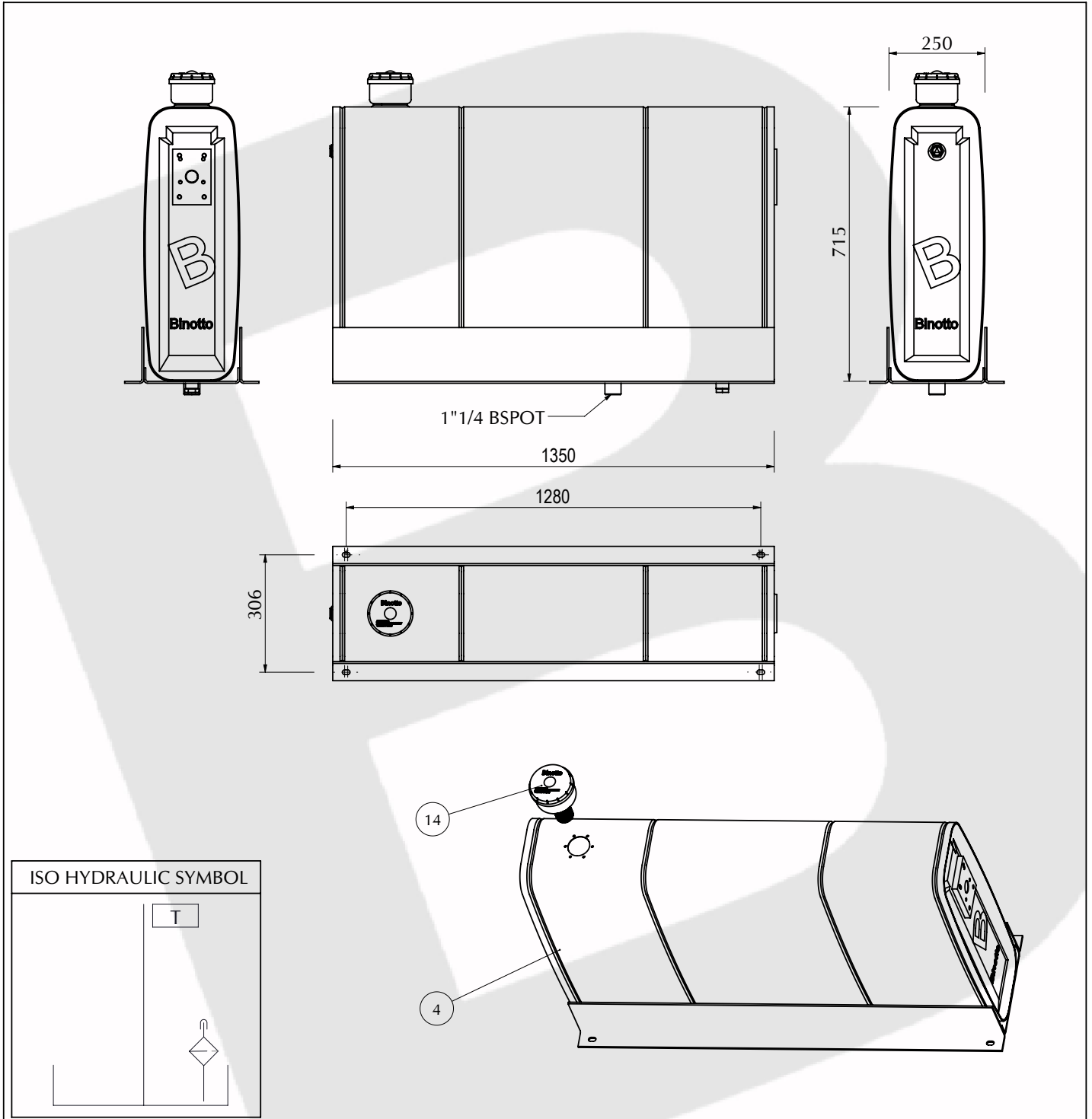
CONFIGURATION :

TANK TYPE

SERB#BBXCFXHCC

Rear Cabin oil tank 250x715x1350 VL220V3 Grey [MD220/150]

Technical Characteristics



Spare Parts List

N.	PART NUMBER	DENOMINATION	U.M.	Q.TY
1	LSB#BBXCFXHCC	Oil tank 250x715x1350 VL220/242V3 [MD150-250] G.	N.	1
2	TAP_0126	Air breather filter Pi 0126 MIC	N.	1

BINOTTO SRL

BINOTTO IS CONSTANTLY ENGAGED IN IMPROVING ITS PRODUCTS AND THEREFORE RESERVES THE RIGHT TO MODIFY WITHOUT ANY NOTICE CHARACTERISTICS SHOWN

VIA DIVISIONE JULIA, 7/B - 36031 DUEVILLE [VI] ITALY • TEL. 0039.0444.593290 - FAX. 0039.0444.593357 • E-MAIL. INFO@BINOTTO.COM

Edit.: 01 ● 2008

Rev.: 00 ● 2004

Date: 21/02/2008

Pag.: BBXCFXHCC_01