

END OF STROKE

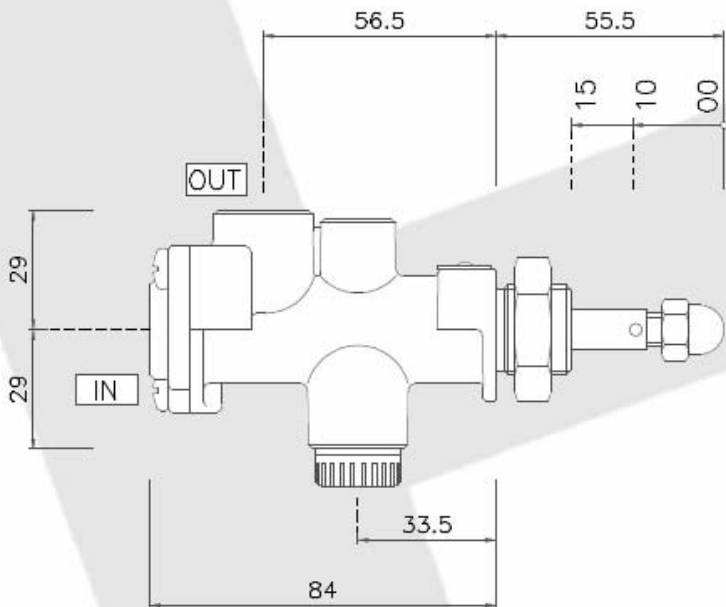
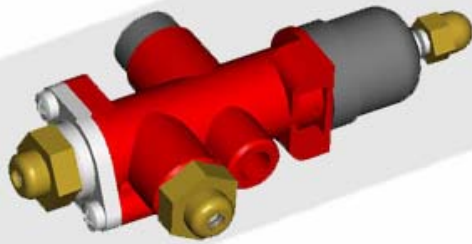
TYPE : HEAVY DUTY

KVLV.TYPE

KVLV_FC

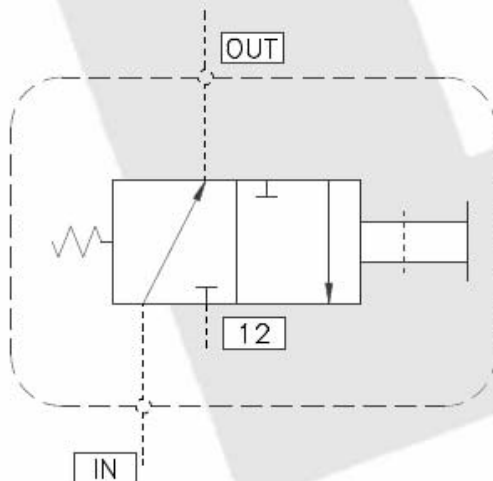
PNEUMATIC LIMIT SWITCH KIT - NO

Technical Characteristics



0 =	SECTION 02 SUPPLIED
10 =	SECTION 02 OUT OF WAY
15 =	SECTION 02 EXHAUST

ISO SYMBOL



WORKING DATA

WORKING MEDIUM	AIR
OPERATING PRESSURE	MAX 10 bar
WORKING TEMPERATURE	-40°C+80°C
STROKE	15 mm
NOMINAL DIAMETER	ø 8
WEIGHT	Kg 0,540

BINOTTO SRL

BINOTTO IS CONSTANTLY ENGAGED IN IMPROVING ITS PRODUCTS AND THEREFORE RESERVES THE RIGHT TO MODIFY WITHOUT ANY NOTICE CHARACTERISTICS SHOWN

VIA DIVISIONE JULIA, 7/B - 36031 DUEVILLE [VI] ITALY • TEL. 0039.0444.593290 - FAX. 0039.0444.593357 • E-MAIL. INFO@BINOTTO.COM

Edit.: 04 • 2006

Rev.: 04 • 2007

Date: 01.04.2006